

Growing Healthy Together



Oroville Hospital
**COMMUNITY BENEFIT
IMPLEMENTATION
STRATEGY 2026-2029**

Oroville Hospital
Community Benefit
Implementation Strategy
2026-2029

Nonprofit hospitals, such as Oroville Hospital, are required by the Internal Revenue Service to conduct a Community Health Needs Assessment (CHNA) every three years and to adopt an Implementation Strategy to address unmet health needs identified through the CHNA process. Oroville Hospital's health focus areas for the 2026-2029 Community Benefit Implementation Strategy are: Access to Care, Mental Health and Well-Being and Chronic Diseases.

The CHNA is part of Oroville Hospital's continuing process of ensuring that services are responsive to the needs of the community. The CHNA helps identify significant health needs for the region, using publicly available health and health-related social needs data. Additionally, the CHNA includes input from community stakeholders who represent the broad interests of the communities served by Oroville Hospital. Stakeholders, including those with expertise in public health, were interviewed and asked to prioritize community health needs according to the highest level of importance in the community.

Oroville Hospital has remained committed to enhancing the equitable well-being and quality of life of its exceptional community. Throughout the years, an abundance of thought and intention has gone into cultivating business practices that facilitate an environment where staff, providers, patients and community members feel represented, understood and appreciated. The business practices of the hospital reflect the commitment of the organization to support minority and underserved businesses; recruit staff that are rich in cultural diversity and providing equitable wages and benefits; and engage with all members of the community with respect and dignity. The hospital will continue to develop programs and resources to facilitate healing and a healthy future for those individuals living in poverty in the service areas.

HEALTH FOCUS AREAS

Access to Care

Community Benefits focus on supporting access to healthcare and services for under-served communities through hospital programs and community partnership organizations. Programs include, but are not limited to, the following priorities: Financial Assistance/Enrollment Assistance, Multispecialty Care, Transportation and Rehabilitation, Preventative Health Vaccinations, Screenings and Education.

Mental Health and Well-Being

Community Benefits focus on increasing access to mental health and substance use programs in the community. Programs include, but are not limited to, the following priorities: Mental Well-Being, Social Work/Case Management and Pain Management.

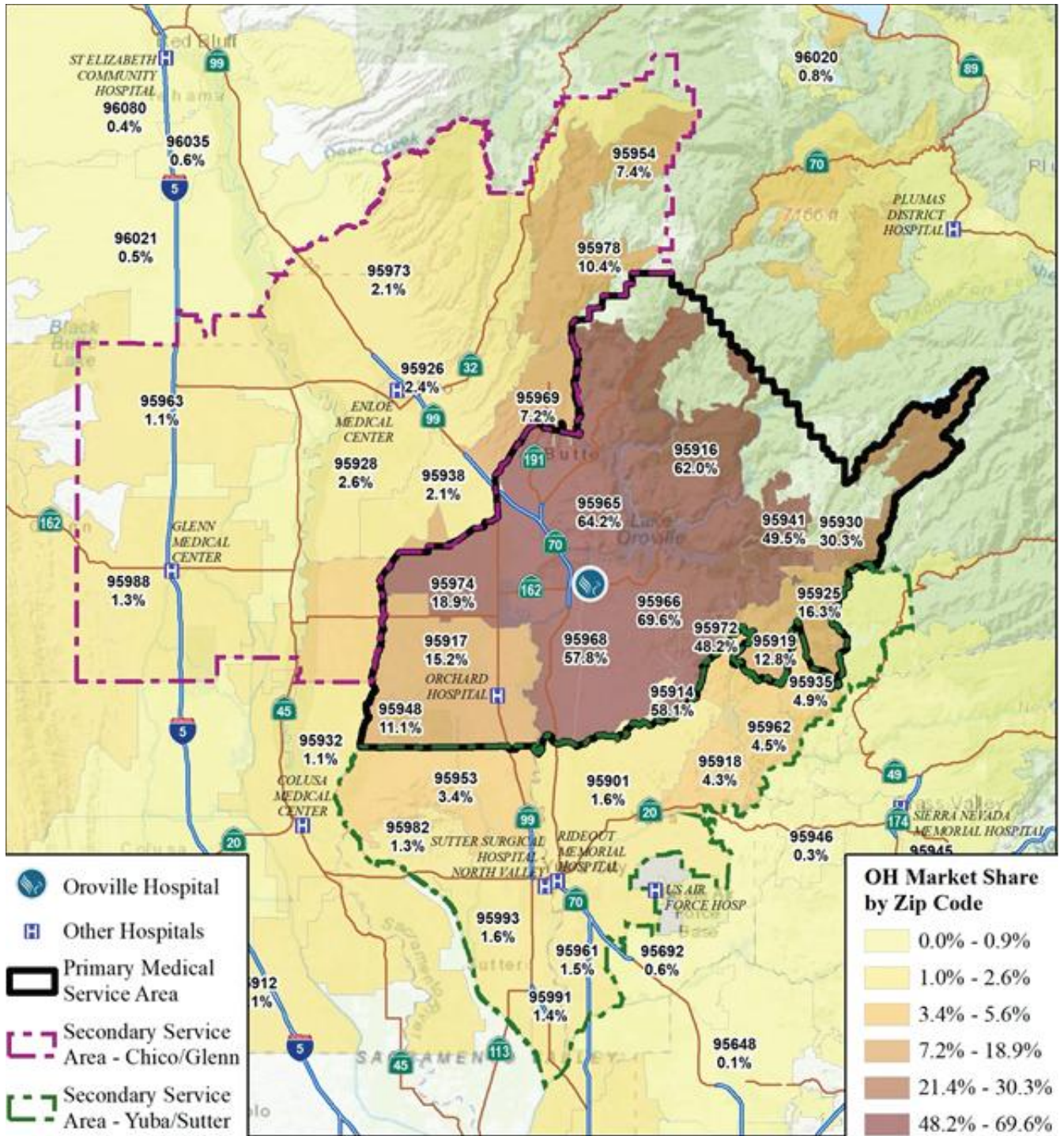
Chronic Diseases

Community Benefits focus on prevention and monitoring of chronic conditions and their risk factors. Programs include, but are not limited to, the following priorities: Chronic Care Management, Preventative Care, Nutritional Therapy, Surgery Access, and Support Resources.

About Oroville Hospital and Its Service Area

Oroville Hospital is an acute care facility specializing in a broad range of inpatient and outpatient services, including multiple physician practices. With a medical staff of more than 200 physicians, Oroville Hospital provides the highest quality medical care in a friendly and compassionate environment.

The hospital is located at 2767 Olive Highway in Oroville, California. It primarily serves the zip codes in south Butte County, the Yuba County foothills, and the southeast portion of Plumas County. The primary service area includes the following locations: Biggs (95917), Gridley (95928), Oroville (95965, 95966), Bangor (95914), Berry Creek (95916), Brownsville (95919), Clipper Mills (95930), Challenge (95925), Feather Falls (95940), Forbestown (95941), Palermo (95968), Rackerby (95972), Richvale (95974), and Strawberry Valley (95981). The secondary service areas comprise the remainder of Butte County and all of Glenn County.



ACCESS TO CARE

Goal: Increase access to health care, including transportation for under-resourced individuals in our community.

Anticipated Impacts: Increase affordable health care and resource access.

Evaluation: Programs and strategies will be evaluated through ongoing data collection and reporting.

Financial Assistance/Enrollment Assistance

Financial counselors at Oroville Hospital will continue to assist with the application for the hospital's financial assistance program, available to qualified patients. These are patients who are self-pay, have high medical costs and have a family income that does not exceed 400% of the federal poverty level. (See Oroville Hospital's [Financial Assistance Policy](#) for details.)

Financial counselors will continue to be available to help begin the eligibility process for Medical and the County Medical Services Program.

Multispecialty Care

Oroville Hospital remains committed to recruiting providers that bring new specialties to our community. It will continue to offer comprehensive care at its multispecialty clinics in Oroville and Yuba City. The Oroville Dove's Landing facility provides: Primary Care, Allergy & Immunology, Cardiology, Endocrinology, Nephrology, Pain Management, Urology, Urogynecology, and Bariatric Surgery. The Yuba City Clinic provides services for Ophthalmology, and Vascular Conditions.

Transportation

Oroville Hospital will continue to provide inpatient transportation to local community-based care external to the hospital. Drivers are crisis intervention-certified and available 24/7.

Plumas House

Oroville Hospital will continue to operate Plumas House, a care facility established to support patients who are displaced or homeless after their discharge from the hospital. Plumas House residents have 24/7 direct care, daily meal service, transportation to medical and dental appointments, and access to resources to help meet their needs.

Post-Acute Center

Oroville Hospital will continue to operate its skilled nursing facility, specializing in post-acute rehabilitation which focuses on a successful transition from hospital to home. Rehabilitation programs can provide Orthopedic Rehab, Cardiac Rehab, Stoke and Neuro Rehab and Functional Vision Rehab. The program also provides physical, occupational and speech therapy.

Immunization Clinics

Oroville Hospital will continue to offer no cost influenza vaccines to the community through walk-up and drive-through flu clinics, making it more accessible for those who may be more vulnerable and/or older generations to receive vaccines.

Preventative Health Screenings and Education

Oroville Hospital will continue to promote preventive screenings at its Valley Medical Imaging Center. It will continue to educate the community on the importance of prevention and screening options in the area. The hospital will continue its partnership with community groups to sponsor events related to breast health awareness, cardiovascular health and more.

Cash and In-Kind Donations

Oroville Hospital is proud to be an active participant in the community and will continue to seek ways to connect the hospital with those we serve. We will make monetary contributions and volunteer time to bridge the funding gap with groups that have a shared mission of improving the overall health of our community.

MENTAL HEALTH AND WELL-BEING

Goal: Increase access to mental health and substance use services by focusing on a patient-centered integration approach of health care and community resources to address individual patient needs.

Anticipated Impacts: Increase access to clinical services and mental health and well-being programs in our community.

Evaluation: Programs and strategies will be evaluated through ongoing data collection and reporting.

Mental Well Being Clinic

The Neuropsychiatric Outpatient Clinic will continue to address accessibility issues by offering pediatric and adult psychological assessments, psychotherapy, and medication management.

Psychiatric Residency Program

Oroville Hospital became an accredited teaching institute through the American Council of Graduate Medical Education in 2025. The hospital launched the first hospital-based Psychiatry Residency program in Butte County with 10 residents and is approved for a total of 24 residents by 2027. It will continue to offer multidisciplinary treatment programs, including intensive treatment, social services, and recreational therapy. Medical resident's clinic experiences include Neurology, Inpatient Psychiatry, Outpatient Psychiatry, Geriatric Psychiatry, Addiction Psychiatry, Consultation/Liaison Psychiatry, Forensic Psychiatry, Emergency Psychiatry, and Community Psychiatry.

Social Work/Case Management

Oroville Hospital will continue to facilitate access to preventative care, primary care, outpatient care, and resources and referrals for health-related social needs for individuals in the community. Case management and social workers will continue to work alongside the psychiatry program residents for a collaborative, comprehensive care approach for all patients.

Pain Management

Chronic pain visits to Oroville Hospital's Emergency Department will continue to be focused on alternatives to alcohol, marijuana and addictive pain medicine, as appropriate. Follow-up will continue to be referred to the Comprehensive Pain and Spine Center, where treatment is closely monitored. The center can treat addictive substance use disorders, delivering specialized medical and behavioral services, including medication management.

CHRONIC DISEASES

Goal: Increase access to chronic disease services, including Cardiovascular Disease and Heart Health, Food Insecurity and Obesity services.

Anticipated Impacts: Increase access to related chronic disease prevention and services.

Evaluation: Programs and strategies will be evaluated through ongoing data collection and reporting.

Chronic Care Management

The Chronic Care Management program will continue to help patients who are suffering from two or more chronic conditions (including heart disease and hypertension) and are established with an Oroville Hospital primary care provider. Monthly check-ins include preventative measures, such as appropriate health screenings, in a timely matter. The program also ensures that patients have their required prescriptions filled and that they are not experiencing any adverse side effects. They can also schedule or reschedule patients with an Oroville Hospital provider, to take the burden from the patient, and higher the likelihood that patients receive the care they need to properly manage their chronic conditions.

Preventative Care and Diagnosis of Heart Disease

Oroville Hospital will continue to take an active approach to cardiovascular health to ensure the appropriate management and treatment of heart disease. The Cardiac Catheterization Lab will continue to provide a full range of testing to determine the prognosis and treatment of a particular disorder. Programs will continue to be available that help mitigate the impact of heart disease, including education, training, and initiatives to encourage the reduction of risk factors such as smoking, obesity, poor diet, and physical inactivity.

Nutritional Therapy

Oroville Hospital’s healthcare services will continue to include tailored nutrition education to support a healthier lifestyle. Registered Dietitians work with patients and their primary care providers to develop an individualized meal plan that fosters ongoing support for attaining the best possible health outcomes. Dietitians offer consultations and education for patients needing assistance with menu planning, food preparation, healthy activities, and exercises.

Surgery Access

The Oroville Hospital Bariatric Center will continue to offer Bariatric surgery for accelerated weight loss options. This minimally invasive surgery is a tool that makes it easier for an individual to lose excess weight when other weight loss programs and medications, have been insufficient. Through the weight management program, patients work with a registered dietitian to learn how to track their calorie intake while meeting their nutritional needs.

Support Groups

Oroville Hospital will continue to hold its monthly Stroke and Brain Injury Support Group. The group is free and open to survivors, caregivers, friends, and family, providing a safe space for individuals to heal and connect with others who share similar experiences. The support group sessions are educational, while providing members with the ability to have fun through music and group activities.

HEALTH NEEDS THE HOSPITAL WILL AND WILL NOT ADDRESS

Oroville Hospital has longstanding commitments to filling healthcare gaps in the region. Oroville Hospital’s commitment to health equity and social drivers of health means that many health needs in the hospital’s Implementation Strategy address the significant health needs identified in the 2025 CHNA. Significant health needs that are not specifically addressed in the Implementation Strategy are Economic insecurity and Housing affordability. Oroville Hospital acknowledges the importance of these health needs and will continue its commitment to leverage the region’s expertise in improving our community’s health in these areas.

IMPLEMENTATION STRATEGY ADOPTION AVAILABILITY AND COMMENTS

This Implementation Strategy report was adopted on April 14, 2026. This report and other Community Benefit documents are available to the public on the hospital’s website, which can be accessed [here](#). To send comments or questions about this report, please send your feedback to: info@orohosp.com.



Oroville Hospital

2767 Olive Highway

Oroville, CA 95966

www.OrovilleHospital.com